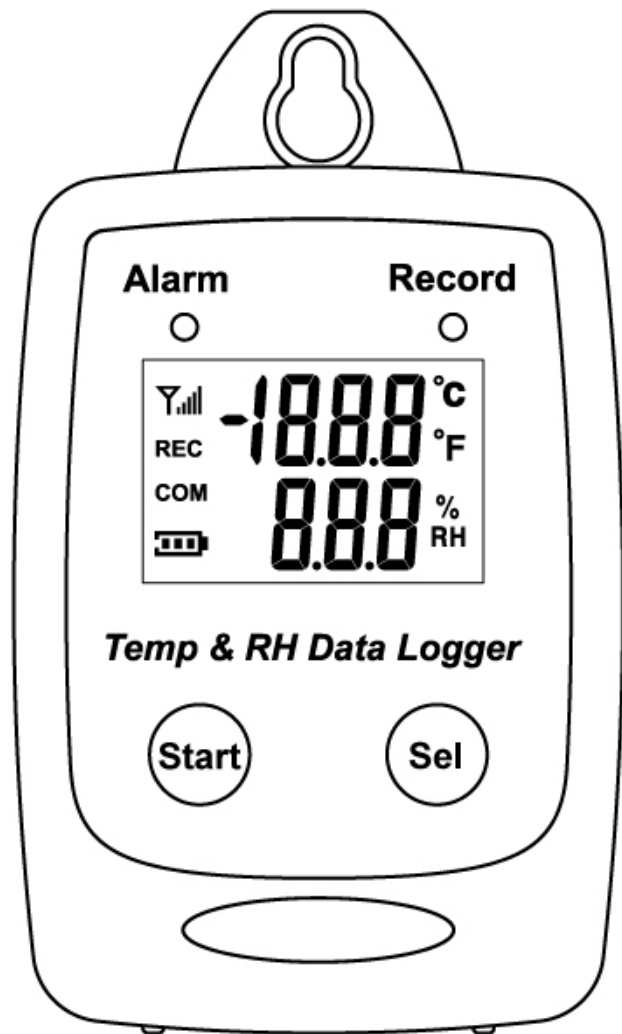


# Temperature/Rh Data logger

## Users Manual



**USB Datalogger**  
**IP 65 Water Proof**

# TABLE OF CONTENTS

FEATURES & SPECIFICATIONS.....	3
START UP AND GENERAL OPERATION .....	7
LCD Display.....	8
Sampling Rate .....	9
Recording and Datalogging .....	10
PC SOFTWARE INSTALLATION .....	11
USING PC SOFTWARE.....	13
Connect Temperature/Rh Datalogger to PC.....	14
Setup Screen.....	17
Download Records .....	19
Graphic & Chart Analysis .....	22
Data in Listing Format .....	23
Data Export.....	25

## FEATURES & SPECIFICATIONS

### Features

- Measure humidity and temperature-
- Datalogging- 50,000 records
- Fast USB download
- Easy- to-Use PC software for parameter settings and data analysis
- Internal Humidity Temperature alarm

### Specifications

#### General

Operation Condition	-40-185°F (-40-85°C)
	1-99% RH, non-condensing

#### Relative Humidity Sensor

Type	Capacitor
Measurement Range	1%-99%
Accuracy	±3.0%RH(20~80%) ±5.0%RH(<20%,>80%)
Resolution	0.1%

## Temperature Sensor

Type	Thermistor
Measurement Range	-40-185°F (-40-85°C)
Accuracy	±0.6 °C (±1.2 °F )from -20-50 °C (-4 to 122°F) ±1.0°C (±1.8°F) all other ranges.
Resolution	0.1 °C

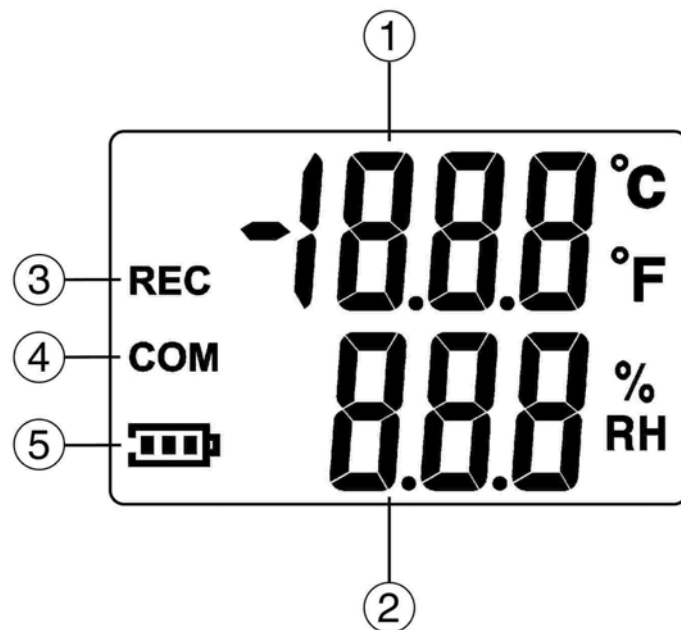
## Power Supply

Battery	One 3.6V ½ AA lithium battery
Battery Operation	1 Year
External Power Supply	5 VDC with 0.5A.

## Applications

- Building HVAC monitoring
- Indoor air quality survey
- Locate the presence of combustion fumes from vehicles and appliances

## LCD Display



LCD

1.	Temperature Display	4.	USB Communication
2.	Humidity Display	5.	Battery Level Indicator
3.	Recording		

## WHAT'S IN THE BOX

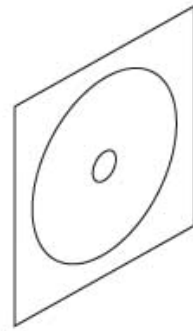
1. Main Unit



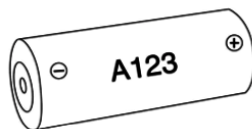
2. USB Cable



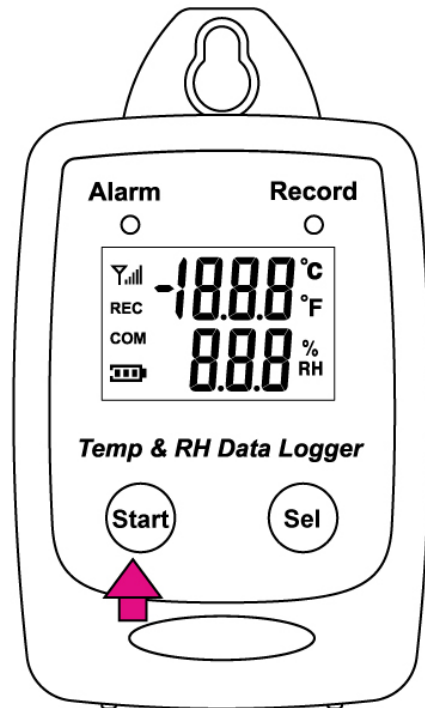
3. Installation Disk



4. 3.6V ½ AA  
lithium battery



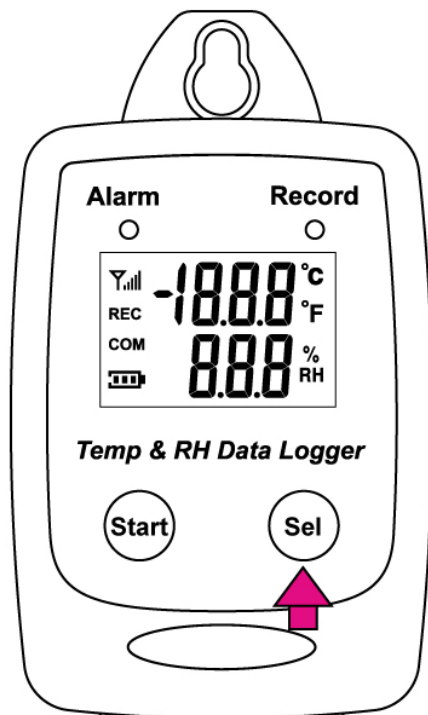
## START UP AND GENERAL OPERATION



- Press the Start button for 2 seconds to turn on Temperature/Rh Datalogger
- The unit is ready to use.

## LCD Display

- Press Sel to jump to the next LCD display.



- Main Screens (1-3)

1.	2.	3.
Main Screen Temperature(C)	Main Screen Temperature.(F)	% of Memory Left Total 24,000 records

Main Screens



## Sampling Rate

(5sec / 10sec / 1min / 5min / 10min / 30min / 1 hour/ 2 hour)

Can only be set from PC setup screen.

The image shows a screenshot of the 'Data Logger Setup' window. The 'Setting' tab is selected. Under the 'GENERAL' section, the 'Interval' dropdown menu is open, showing options: 5sec, 10sec, 30sec, 1min, 5min, 10min, 30min, and 1hour. The '5sec' option is currently selected. Other settings include: Product# Temp & RH Data Logger - USB, Current Date&Time 01/08/2011 10:34:56PM, Start Date&Time 01/01/2011 01:06:41AM, End Date&Time 01/01/2011 03:35:54AM, Unit Description Temp & RH Data Logger, Time synchronization checked, Temperature Unit F, Alarm Unit On. Under the 'ALARM LIMIT' section, the limits are: High Rh Limit 90 %RH, Low Rh Limit 20 %RH, High Temp Limit 70 F, and Low Temp Limit 20 F. At the bottom, there are buttons for Help, Save Settings, and Close.

GENERAL	
Product#	Temp & RH Data Logger - USB
Current Date&Time	01/08/2011 10:34:56PM
Start Date&Time	01/01/2011 01:06:41AM
End Date&Time	01/01/2011 03:35:54AM
Unit Description	Temp & RH Data Logger
Interval	5sec
<input checked="" type="checkbox"/> Time synchronization	
Temperature Unit: <input checked="" type="radio"/> F <input type="radio"/> C	
Alarm Unit: <input checked="" type="radio"/> On <input type="radio"/> Off	

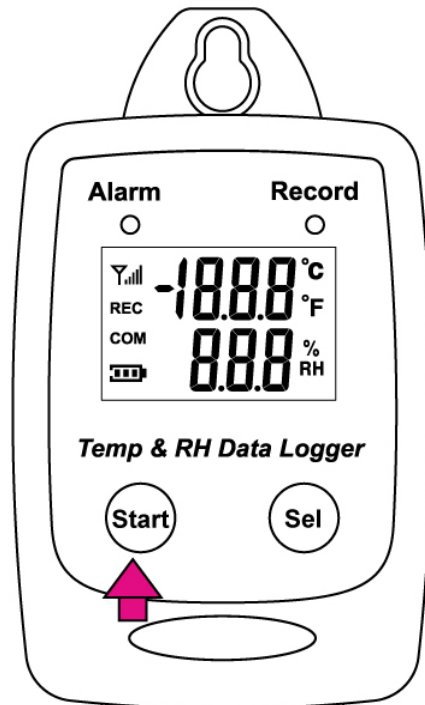
  

ALARM LIMIT	
High Rh Limit	90 %RH
Low Rh Limit	20 %RH
High Temp Limit	70 F
Low Temp Limit	20 F

Buttons: Help, Save Settings, Close

## Recording and Datalogging

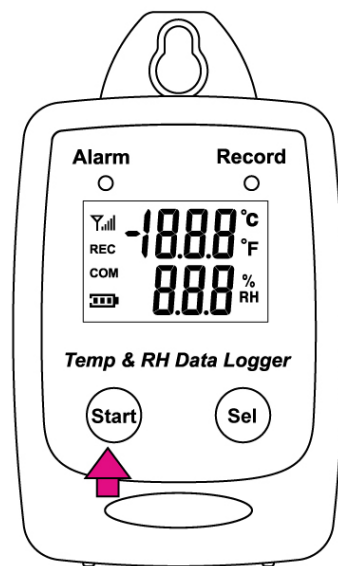
- Press the Start button to start data recording.



- The LCD will display REC when Temperature/Rh Datalogger is in the datalogging mode.



- Press the Start button again to stop recording.



## PC SOFTWARE INSTALLATION

### Installation Requirements:

Minimum system requirements for the software:

-Pentium III - 500 MHz processor or equivalent with 128 megabytes of RAM.

### Optimal Performance:

-Pentium 4 - 2.8 gigahertz processor or equivalent with 256 megabytes or RAM.

### Operating System Requirements:

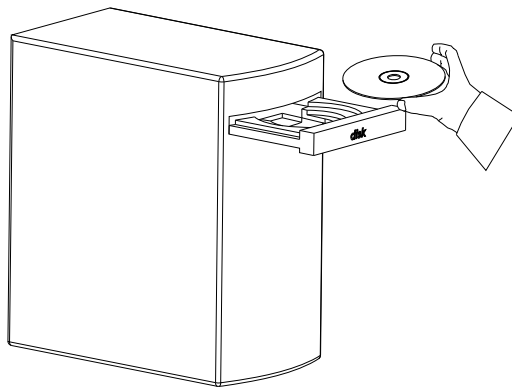
-Windows 2000

-Windows XP

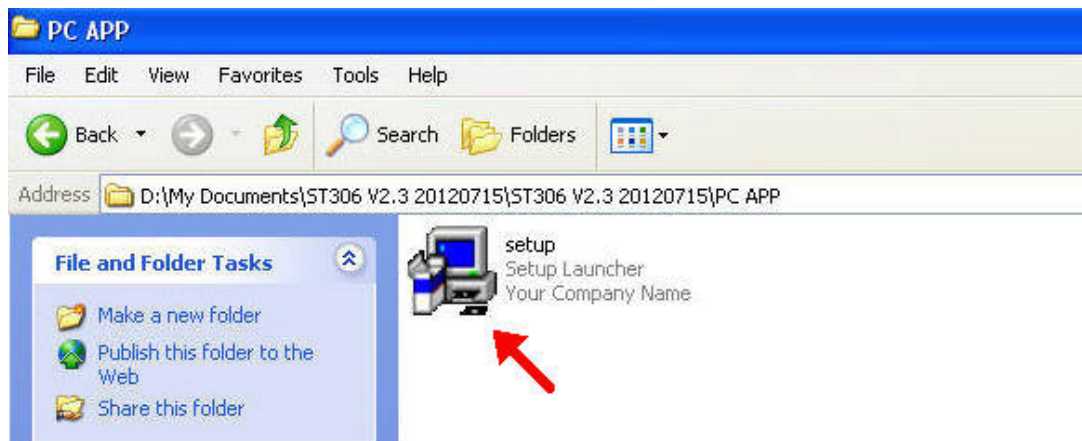
-Window 7

-Window 8

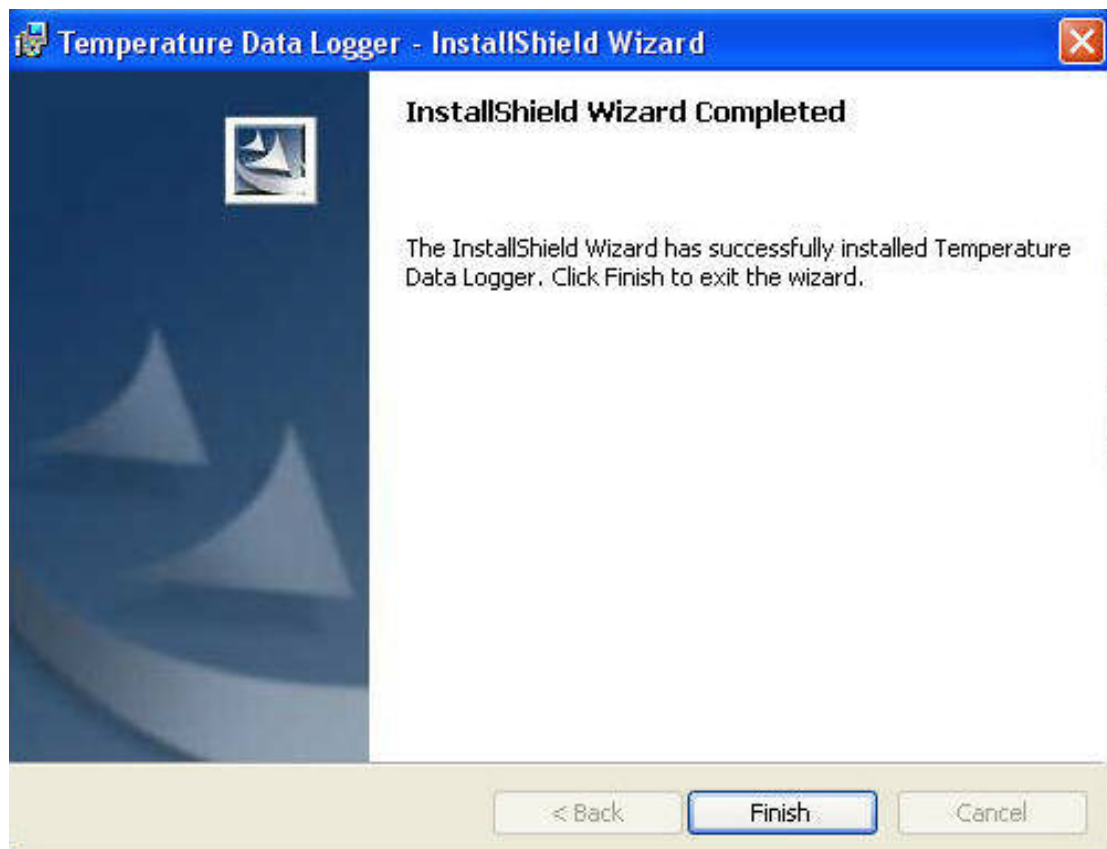
- Insert the CD into the disk drive.



- Click Setup to start installation.



- Follow the steps on the Installation Shield Wizard and click Finish to complete the installation.



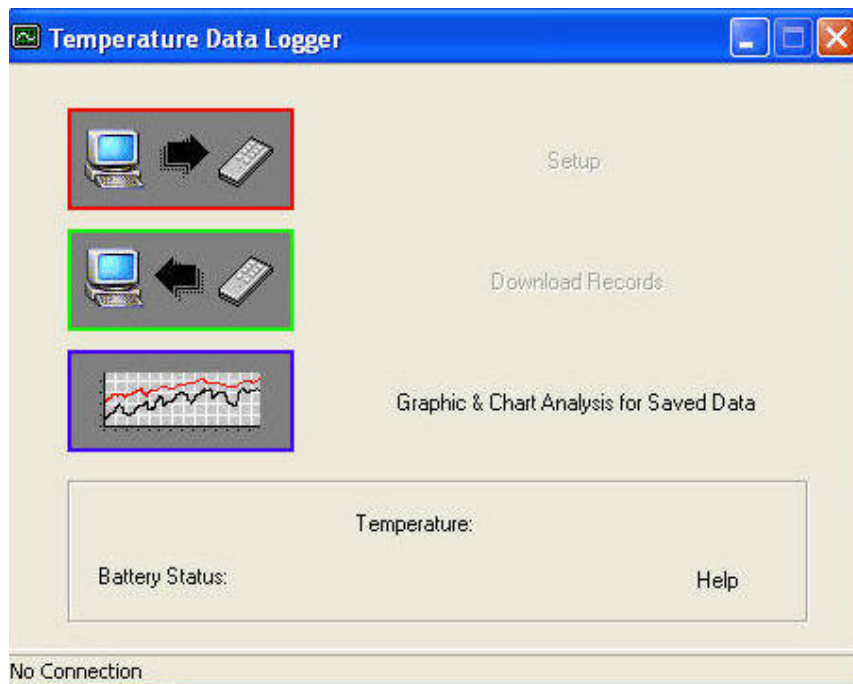
## USING PC SOFTWARE

- Start Window PC software.

- Click on All programs, Click on “Temp& RH Data Logger”
- Click on Logger to start the datalogger program.

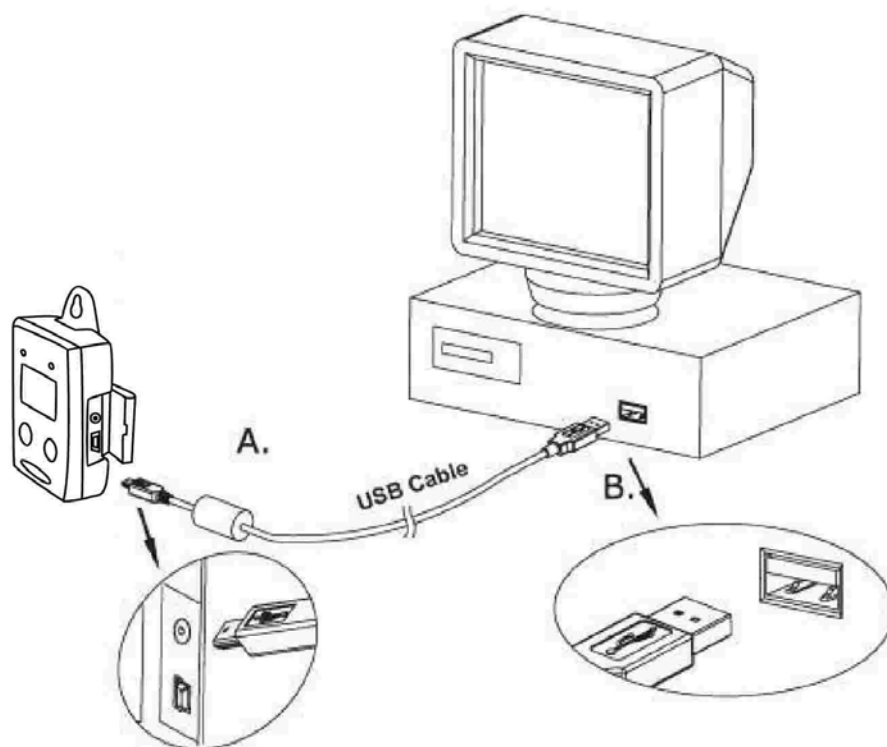


## Connect Temperature/Rh Datalogger to PC



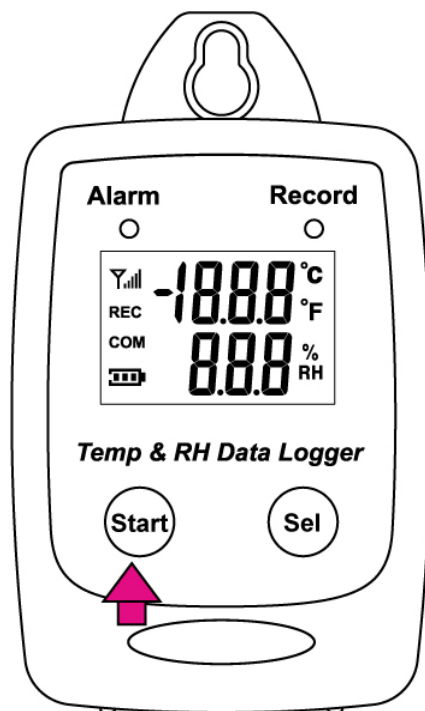
## No Connection Screen

- Connect Temperature/Rh Datalogger to the PC with a USB cable.

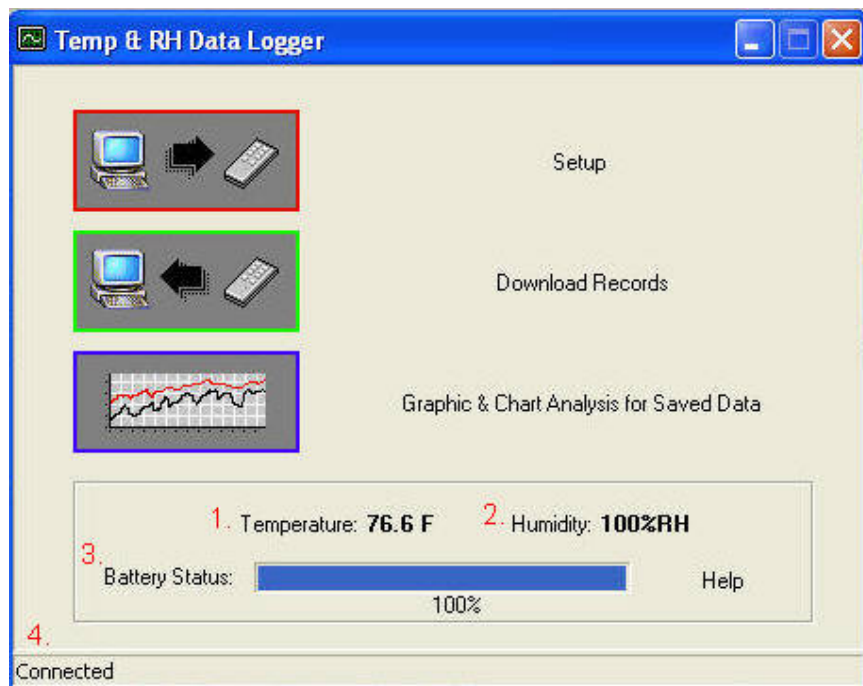


- Press Start for 2 seconds to turn on Temperature/Rh Datalogger.

Temperature/Rh Datalogger is now connected to the PC.



## Connected Screen



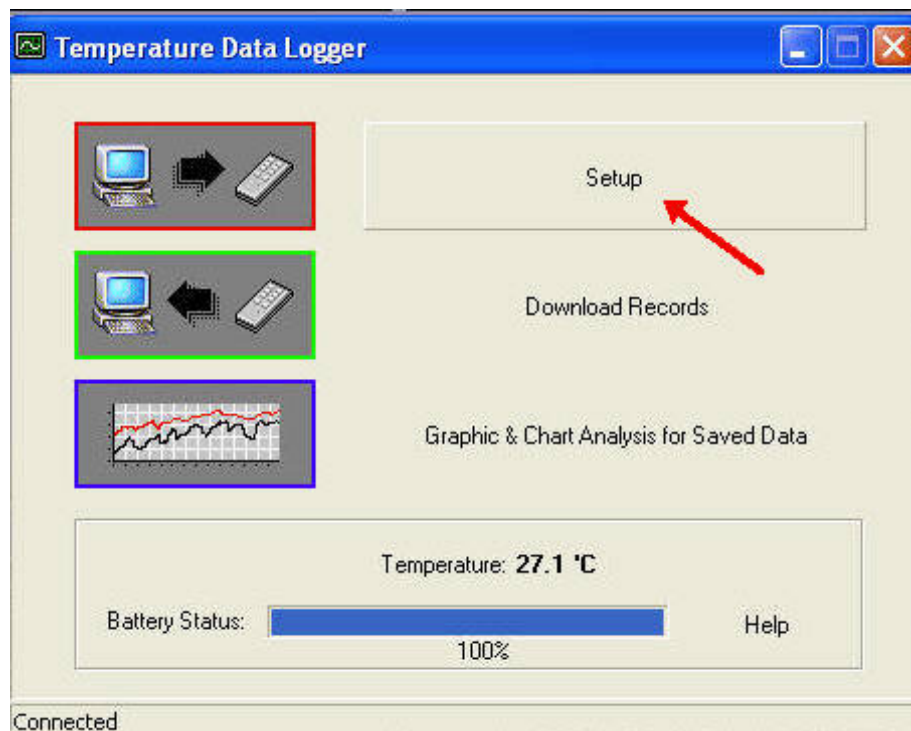
- If the datalogger is properly connected, these three values will show up.



1. Temperature Reading
2. Humidity Reading
3. Battery Status
4. Connection Status- “Connected”

## Setup Screen

- Click “Setup” to enter the Setup screen.



**Data Logger Setup**

**Setting**

**GENERAL**

Product# Temp & RH Data Logger - USB

Current Date&Time 01/01/2011 03:41:20AM

Start Date&Time 01/01/2011 01:06:41AM

End Date&Time 01/01/2011 03:35:54AM

Unit Description Temp & RH Data Logger

Interval 5sec

☒ Time synchronization

Temperature Unit

☒ F ☐ C

Alarm Unit

☒ On ☐ Off

**ALARM LIMIT**

High Rh Limit 90 %RH

Low Rh Limit 20 %RH

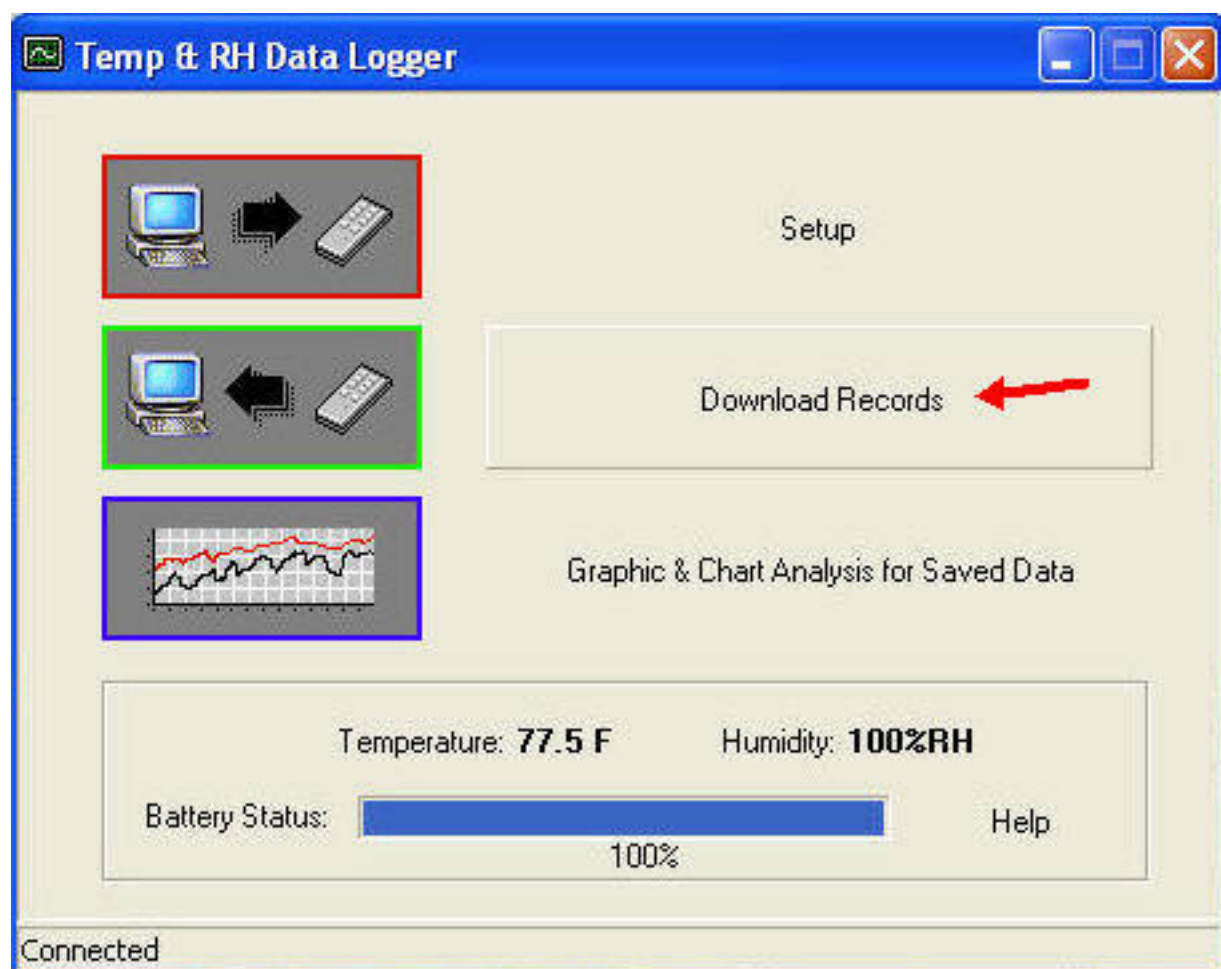
High Temp Limit 70 F

Low Temp Limit 20 F

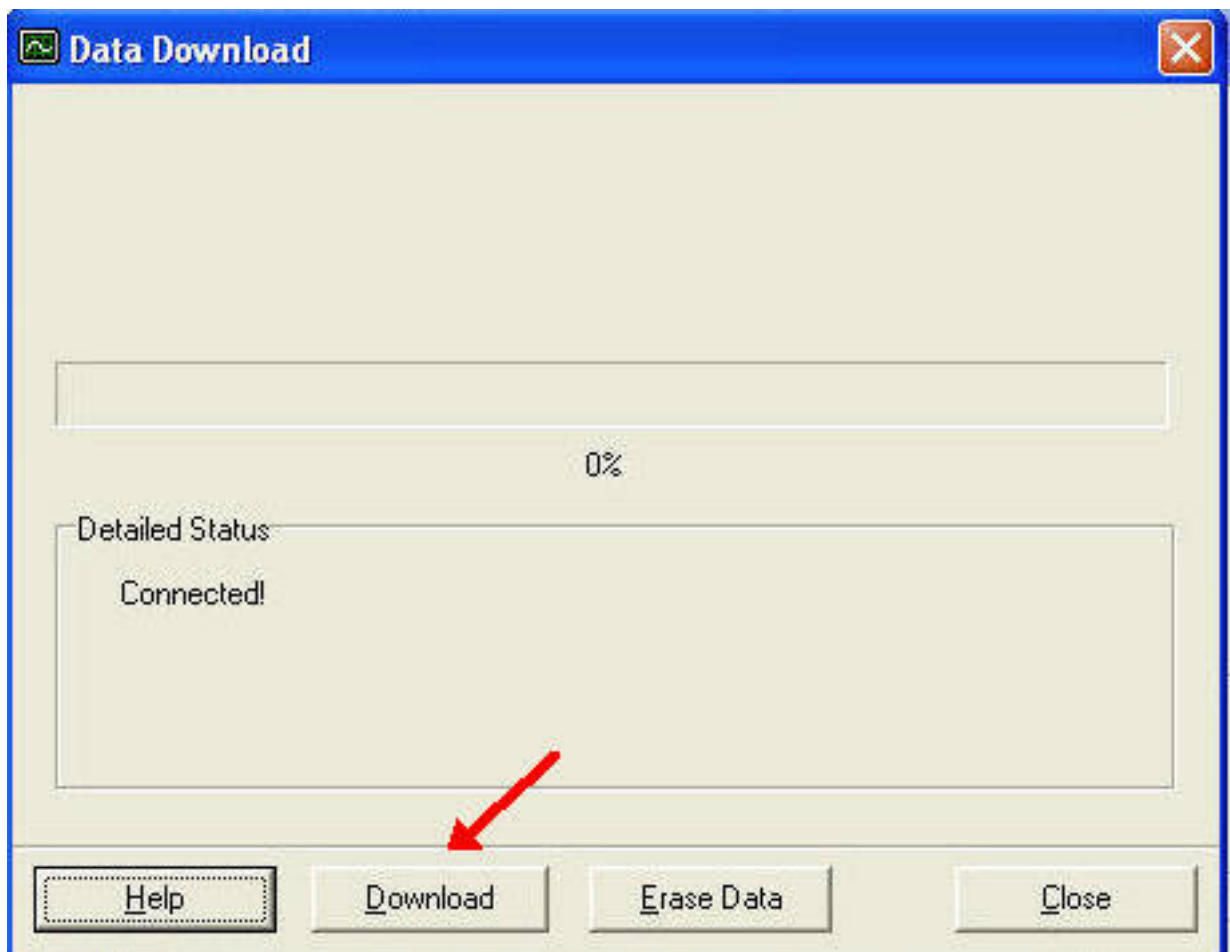
Help Save Settings Close

- The values in the white area can be changed by the user.
- The value in the grey area can not be changed by the user.
- Click “Save Settings” to save the values to the datalogger.

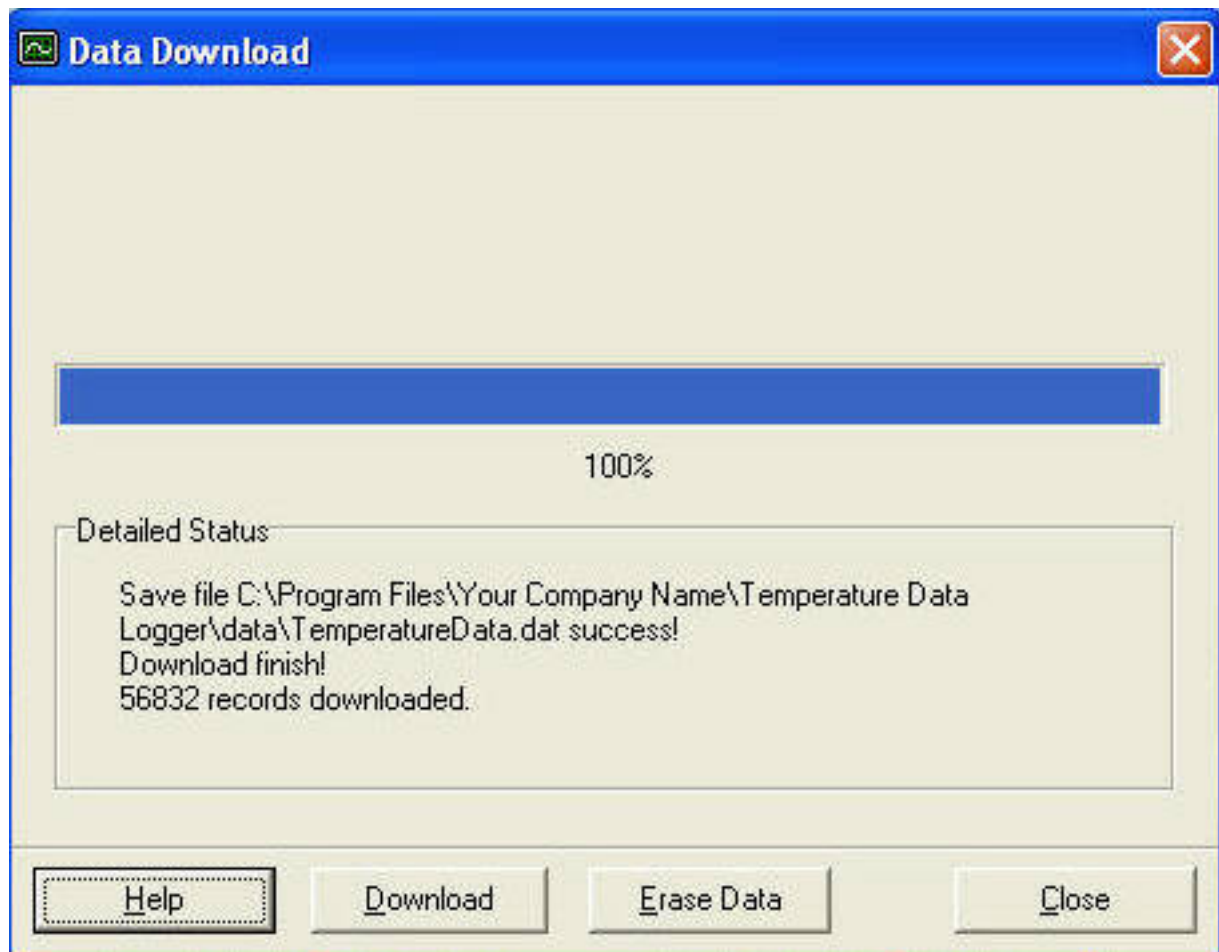
## Download Records



- Click Download to download the stored data.

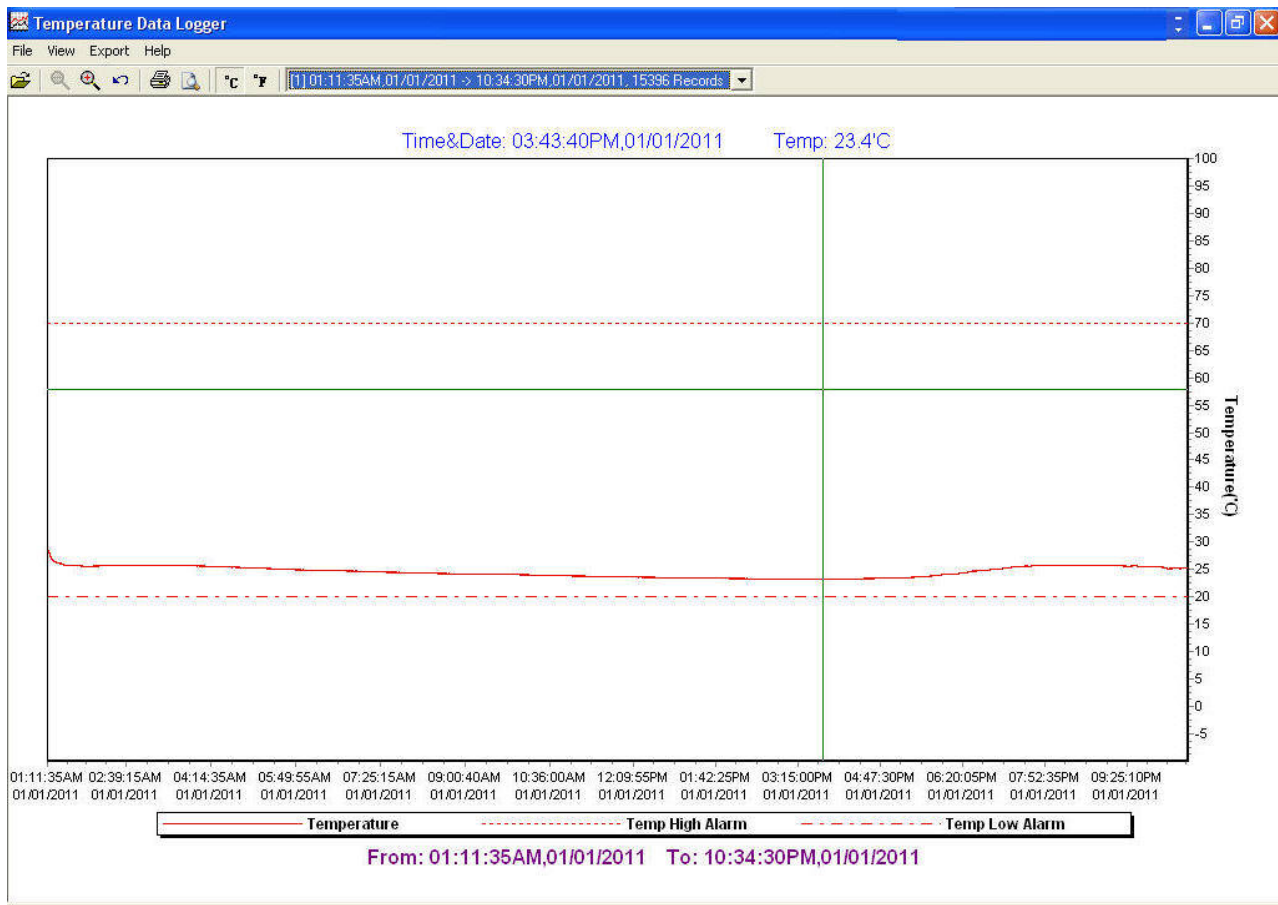


- Click “Download” to start the download.

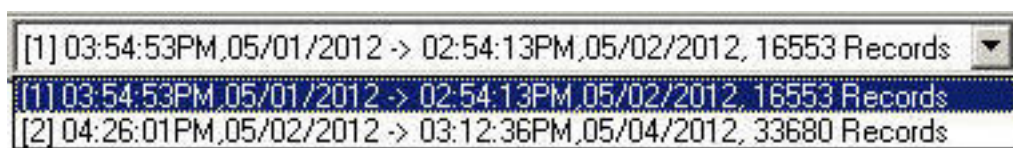


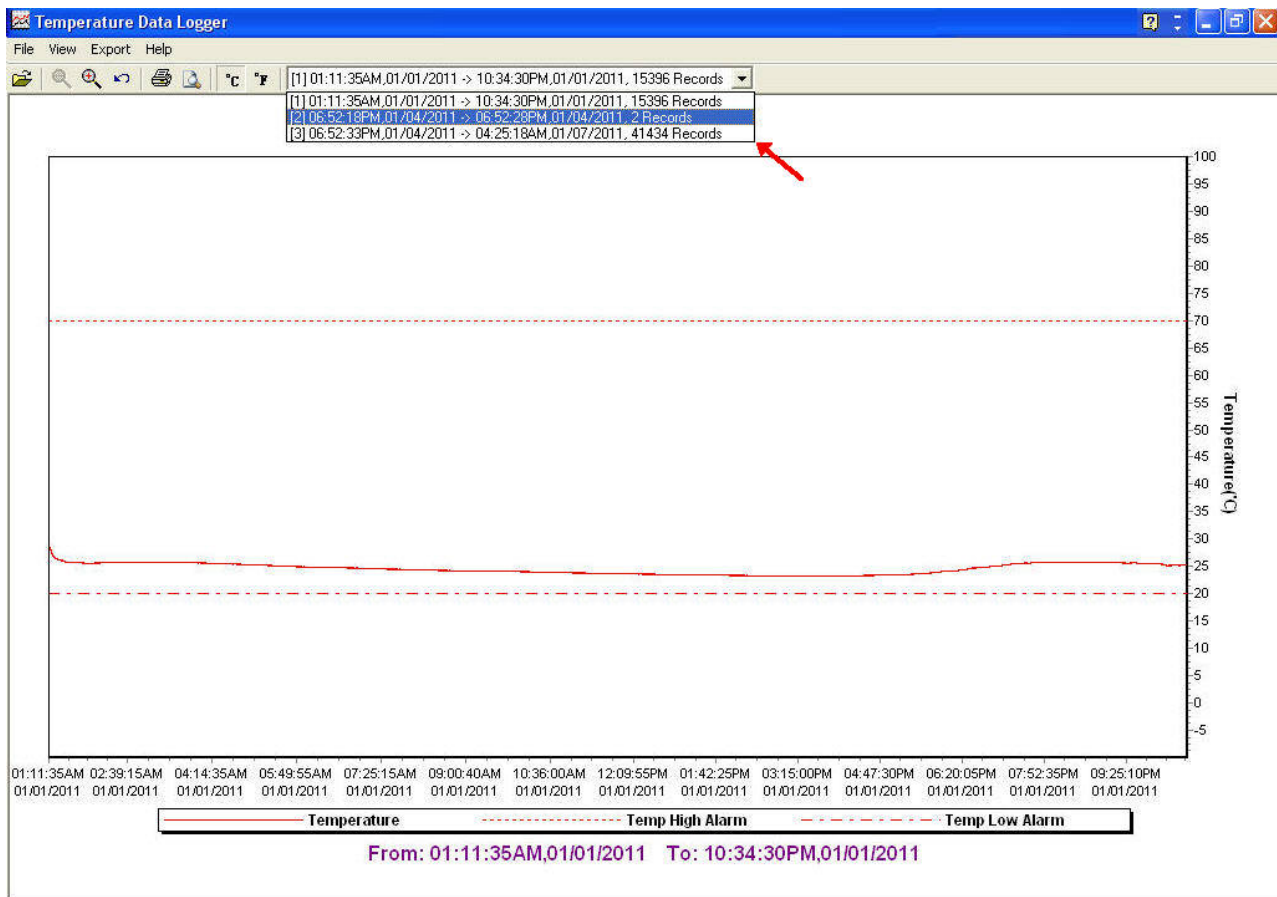
- Download Completed

## Graphic & Chart Analysis



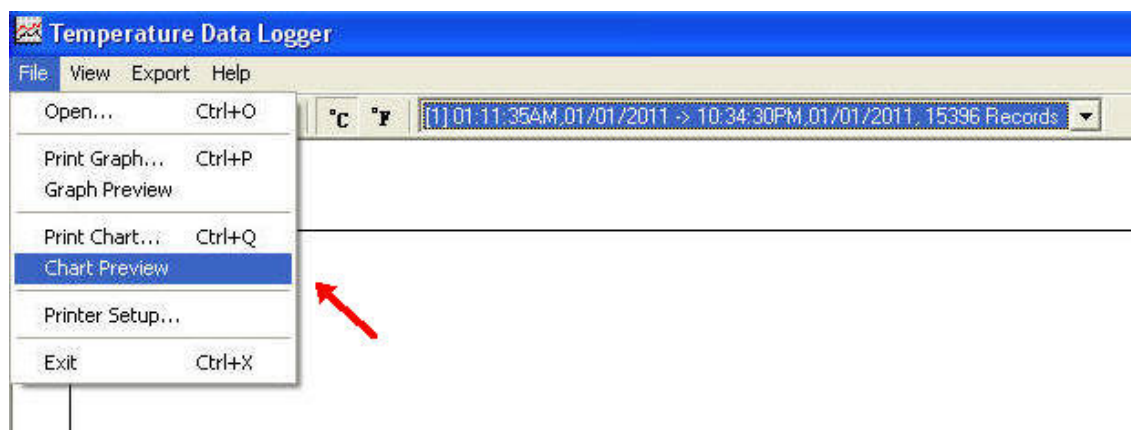
- Downloaded data will first be displayed in graph format.





- Each data groups are listed according to the date of the sampling. Lowest group number represents earliest sampling date.

## Data in Listing Format



To display data in Listing format:

- Click File
- Click Chart Preview

## Data Listing Format

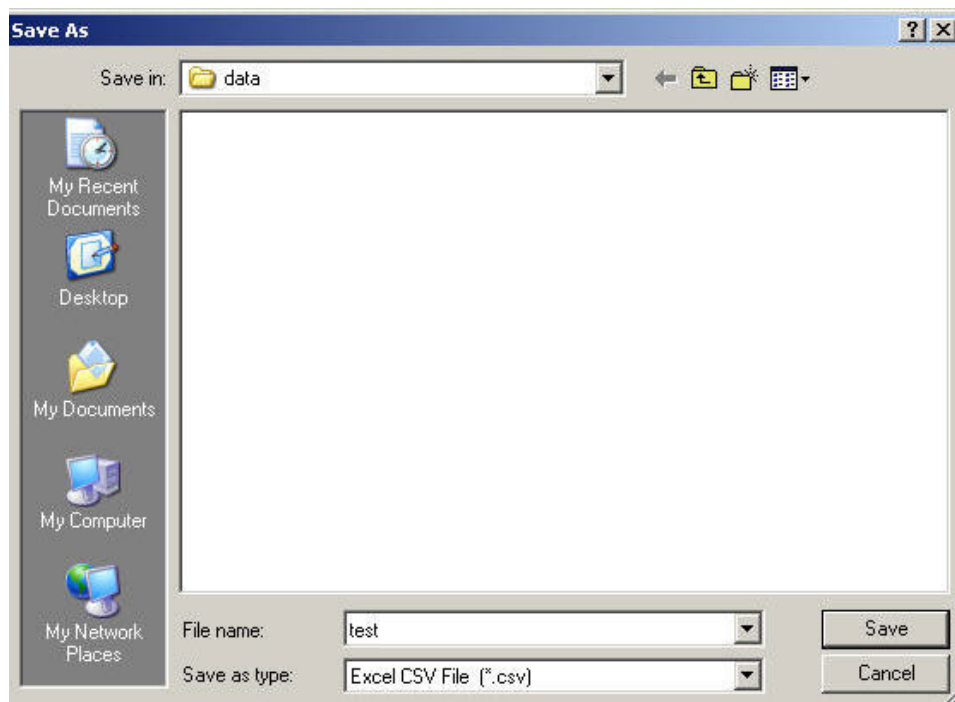
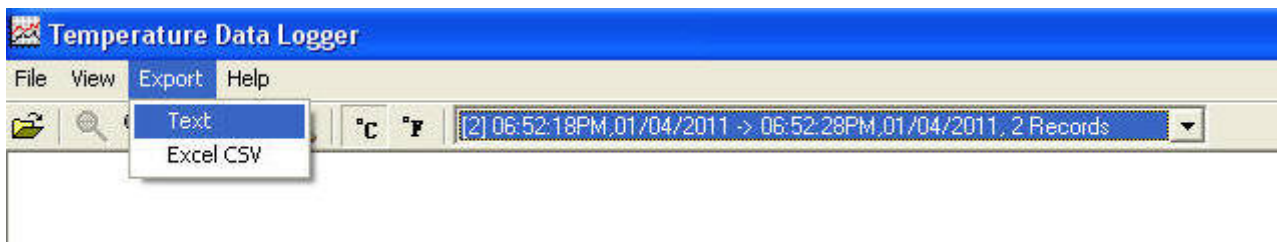
Product Name: Temperature Data Logger  
Description: STLogger Record Data  
Start Data&Time: 06:52:18PM,01/04/2011  
End Data&Time: 06:52:28PM,01/04/2011  
Interval: 10 seconds  
Record Count: 2  
Temp Alarm High: 70.0 'C  
Temp Alarm Low: 20.0 'C

<u>No.</u>	<u>Time</u>	<u>Date</u>	<u>Temp('C)</u>	<u>Alarm</u>
1	06:52:18PM	01/04/2011	33.2	
2	06:52:28PM	01/04/2011	33.5	



## Data Export

- Select export data type: Text or Excel CSV.



Click Save to save the file in .CSV/Txt format.



File Save

